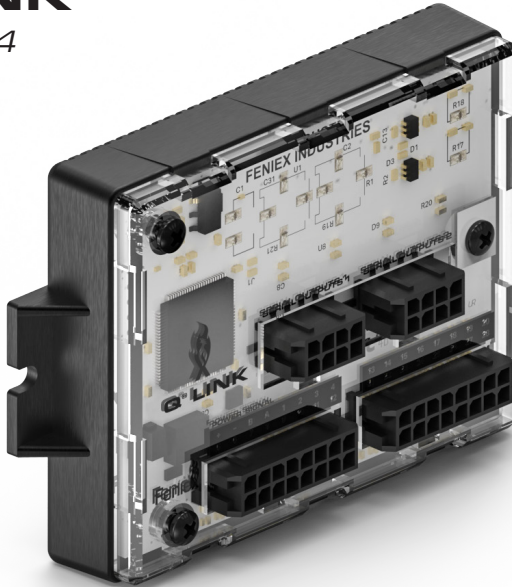


Q[®] SERIES

SERIAL TECHNOLOGY

Q LINK

QLM-24



Specifications ▲
pp. 03

Flash Patterns ▲
pp.03

Data Wire Harness ▲
pp.06

16-pin Wire Harness ▲
pp.08-09



Fenix Product Copyrights This price list and the mentioned Fenix products include or describe copyrighted Fenix material. Laws in the United States and other countries preserve for Fenix Industries and its licensors certain exclusive rights for copyrighted material, including the exclusive right to copy, reproduce in any form, distribute and make derivative works of the copyrighted material. Accordingly, any copyrighted material of Fenix and its licensors contained herein or in the Fenix products described in this Price List may not be copied, reproduced, distributed, merged or modified, transmitted, transcribed, stored in retrieval system or translated into any language or computer language, in any form or by any means, without prior written permission of Fenix Industries, Inc. Fenix and the stylized Fenix logo are registered in the U.S. Patent & Trademark Office.



SAFETY REGULATIONS & WARRANTY

Safety Regulations

The following provides all the information necessary to safely operate the previously listed products of Feniex Industries, Inc. Please read this manual thoroughly before installing or operating your new product in order to prevent any damage or injury. Failure to follow the listed instructions in this manual may result in damage to your products or personal injury.

- Proper installation of this product requires good knowledge of automotive systems, electronics and procedures.
- Please guarantee all vital components of the vehicle are not in danger of being damaged by drilling holes necessary for installation. Check all sides of the mounting surface before drilling any holes into the vehicle.
- Do not install this product in any way that interferes with the deployment of the air bag. Doing so may damage the effectiveness of the air bag and can lead to serious personal and vehicle injury. The installer will assume full responsibility of proper installation of the new unit.
- Please clean the mounting surface before installation of the unit when using tape, brackets, magnet, Velcro or suction cups.
- The product's ground wire must be connected directly to the Negative (-) battery post for effective use of the unit. Please follow all wiring guidelines provided to guarantee long lifespan and productivity. Failing to follow these instructions may result in damage to the product.

Warranty

Feniex Industries, Inc. warrants to the original purchaser that all our products shall be free from defects in material and workmanship. Feniex Industries' speakers, sirens, rocker panels, AM600 Beacons, Torch Lights, AI lightbars, AI Cubes, AM900 Work Lights, 8.5" Dome Lights, Cargo Lights, flashlights, Remote Spot Lights, and controllers are warranted for 2 years from the manufacturing date. In addition, all other products are warranted for 5 years from the manufacturing date.

If a warranty problem occurs, please contact customer support at 1.800.615.8350 or visit the website at www.feniex.com/support.

If the product needs to be returned for repair or replacement, call our customer support line to receive a return merchandise authorization number.

Operational times are from 9 a.m. to 6 p.m. central time, Monday through Friday. Please do not send in product without contacting support first for an RMA number.

Service After Expiration

Feniex Industries will still provide service for all products after the expiration of the warranty. In some instances it may be necessary for the product to be shipped, freight prepaid, and insured for loss or damage to Feniex headquarters.

Warning! Utilizing non-factory screws and mounting brackets may result in loss of warranty coverage.

Copyright

This instruction manual and the Feniex products described in this instruction manual may include or describe copyrighted Feniex material. Laws in the United States and other countries preserve for Feniex Industries and its licensors certain exclusive rights for copyrighted material, including the exclusive right to copy, reproduce in any form, distribute, and make derivative works of the copyrighted material. Accordingly, any copyrighted material of Feniex and its licensors contained herein or in the Feniex products described in this instruction manual may not be copied, reproduced, distributed, merged, or modified in any manner without the express written permission of Feniex Industries, Inc.

Feniex Product Copyrights

The products described in this document are the property of Feniex Industries, Inc. It is furnished by express license agreement only and may be used only in accordance with the terms of such an agreement. Products and documentation are copyrighted materials. Making unauthorized copies is prohibited by law. No part of the product or documentation may be reproduced, transmitted, transcribed, stored in a retrieval system, or translated into any language or computer language, in any form or by any means, without prior permission from Feniex Industries, Inc.



BOX CONTENTS

1x - Q Link

2x - 1ft. Data Wire Harnesses

2x - 1ft. 16-pin Wire Harnesses

1x - 2-pin USB Connector*

1x - Magnet

*These items come attached to the product.

SPECIFICATIONS

DIMENSIONS 3.95" x 2.6" x .75"

WARRANTY 2 Years

VOLTAGE 10-18VDC

CURRENT 5 Amps @ 13V

PATTERNS

1 Attack

2 Cluster

3 Cluster Mix

4 Combo Single

5 Combo Triple

6 Half-Half Single

7 Half-Half Triple

8 One-One Single

9 One-One Triple

10 Two-Two Single

11 Two-Two Triple

12 All-On Single

13 All-On Triple

14 Raging Beacon

15 Figure 8 Chase

16 Night Ride Crossover

17 Hale Storm

18 Pulse

19 I/O Flux

20 Spectrum

21 Progressive Pursuit

FUNCTIONS

1 Tail

2 Cruise

3 Flashing

4 Turn Signal

5 Brake Signal

6 Takedown

7 Work Light

8 Low Power

9 Cut Off

10 Pattern Change

INPUTS

27 Hardwire Inputs

1 Zone Programming Input

BRIGHTNESS

10% 100%

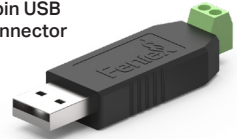
50% Park Pattern

▲ QUICK SETUP GUIDE

■ 1. Unbox Q® Series Product

Remove the Q Series product from its packaging. Locate the Q Series product and the 2-pin USB connector.

2-pin USB Connector



■ 2. Download Q® Link Software

Visit https://feniex.com/p/qlink_change_logs or use the QR code to download the Q Link software.



■ 3. Install Q® Link Software

The Q Link Software is available for both PC and Mac. The software will allow the user to completely configure their Q Series products (i.e function, pattern, color).



■ 4. Connect Q® Series to your Computer

Open Q Link Software. Connect the Q Series product to your computer using the 2-pin USB connector.

2-pin USB to Computer



- ▶ white to port A
- ▶ green to port B

■ 5. Power the Q® Series Product

Connect the red wire to a 12V+ terminal and the black wire to Ground to power on your Q Series product.

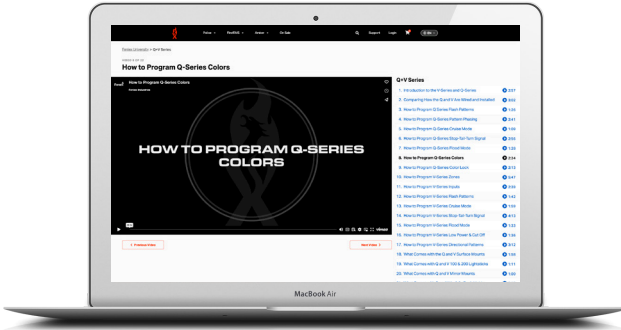
■ 6. Open Feniex University

Open Feniex University to follow step-by-step instructions on how to configure your Q Series product.





FENIEX UNIVERSITY



■ Feniex University

Before installing your Q® Series product, watch our instructional video series; Feniex University. Get an in-depth look at how to program and install your products using the Q® Link Software.



■ Visit Feniex University

feniex.com/university/



■ Download Q® Link Software

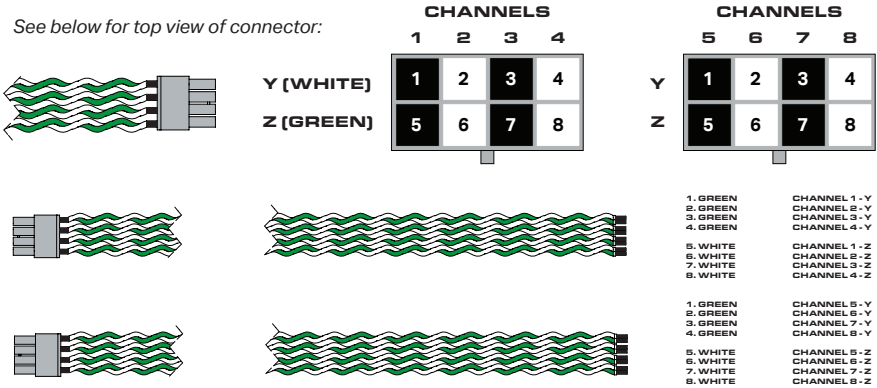
https://feniex.com/p/qlink_change_logs



8-PIN DATA WIRE HARNESS

Connect a maximum of 6 serial Q® Series products per pair of white & green serial channels. The white and green wire pairs must not be split or used separately. For example, a product wired to 1 for white must use 5 for green. You cannot use 1 for white and 6 for green.

See below for top view of connector:



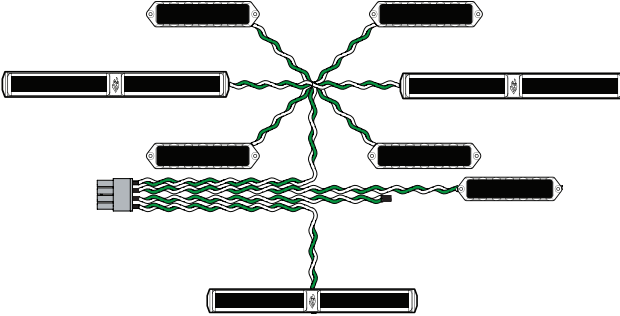
POS.	WIRE FUNCTION	COLOR	GAUGE
1	Channel 1 - Y	White	24G
2	Channel 2 - Y	White	24G
3	Channel 3 - Y	White	24G
4	Channel 4 - Y	White	24G
5	Channel 1 - Z	Green	24G
6	Channel 2 - Z	Green	24G
7	Channel 3 - Z	Green	24G
8	Channel 4 - Z	Green	24G
9	Channel 5 - Y	White	24G
10	Channel 6 - Y	White	24G
11	Channel 7 - Y	White	24G
12	Channel 8 - Y	White	24G
13	Channel 5 - Z	Green	24G
14	Channel 6 - Z	Green	24G
15	Channel 7 - Z	Green	24G
16	Channel 8 - Z	Green	24G

DAISY CHAIN INSTRUCTIONS

When using the daisy chain to connect your serial Q® Series products, only connect 6 serial Q Series products to each green/white data wire set. Do not mix paired green/white wires. Twisted pair cables recommend 7 turns per foot.

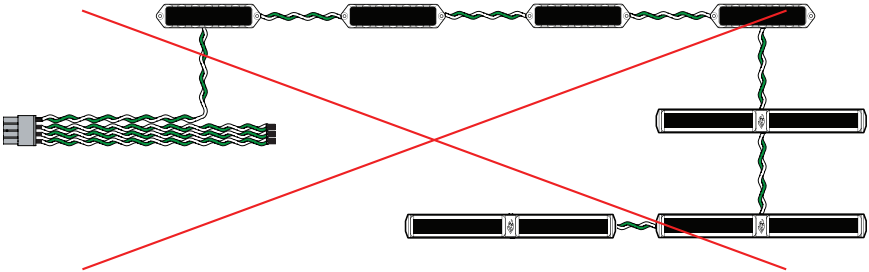
■ Data Wire Harness: Correct Wiring

Connect a maximum of 6 serial Q Series products per pair of green & white serial channels.

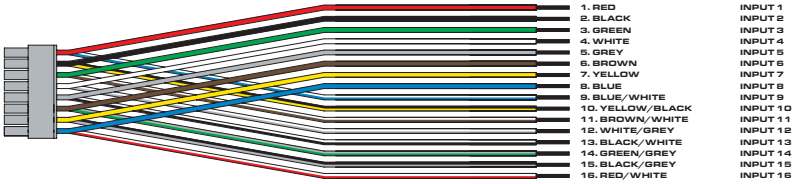


■ Data Wire Harness: Incorrect Wiring

Below illustrates 8 serial Q Series products connected to a pair of green & white serial channels.

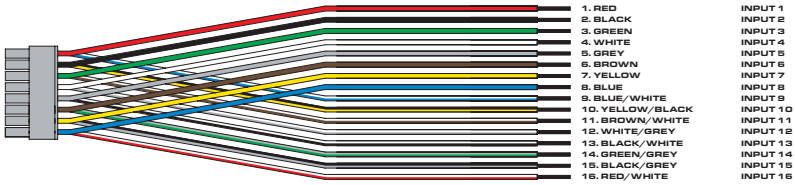


16-PIN WIRE HARNESS: INPUTS 1-16



POS.	WIRE FUNCTION	COLOR	GAUGE
1	12VDC	Red	18G
2	Ground	Black	18G
3	Data Wire B	Green	18G
4	Data Wire A	White	18G
5	Input 1	Grey	18G
6	Input 2	Brown	18G
7	Input 3	Yellow	18G
8	Input 4	Blue	18G
9	Input 5	Blue/White	18G
10	Input 6	Yellow/Black	18G
11	Input 7	Brown/White	18G
12	Input 8	White/Grey	18G
13	Input 9	Black/White	18G
14	Input 10	Green/Grey	18G
15	Input 11	Black/Grey	18G
16	Input 12	Red/White	18G

16-PIN WIRE HARNESS: INPUTS 17-32



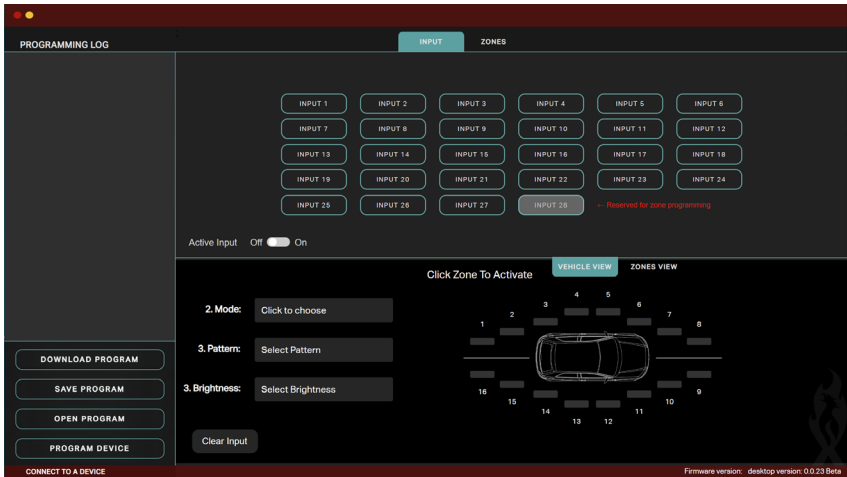
POS.	WIRE FUNCTION	COLOR	GAUGE
17	Input 13	Red	18G
18	Input 14	Black	18G
19	Input 15	Green	18G
20	Input 16	White	18G
21	Input 17	Grey	18G
22	Input 18	Brown	18G
23	Input 19	Yellow	18G
24	Input 20	Blue	18G
25	Input 21	Blue/White	18G
26	Input 22	Yellow/Black	18G
27	Input 23	Brown/White	18G
28	Input 24	White/Grey	18G
29	Input 25	Black/White	18G
30	Input 26	Green/Grey	18G
31	Input 27	Black/Grey	18G
32	Zone Setting Wire	Red/White	18G



Q[®] LINK SOFTWARE

There are 27 programmable inputs, 1 zone selector input, and 16 zones. Each input is capable of multiple “function” configurations (i.e. Input 1 can be programmed with tail lights on Zones 1-2, 15-16, and flashing Attack pattern on Zones 3-4, 13-14, along with Flood on Zones 7-10).

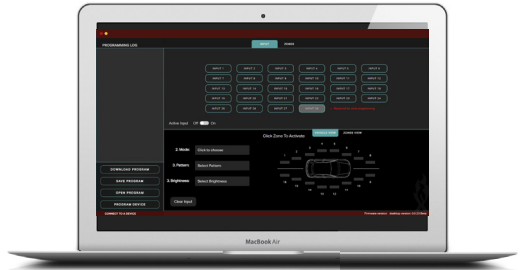
Example of User Interface:



■ Configuring Products

Features:

- ▶ Function
- ▶ Pattern
- ▶ Brightness
- ▶ Color
- ▶ Zone(s)



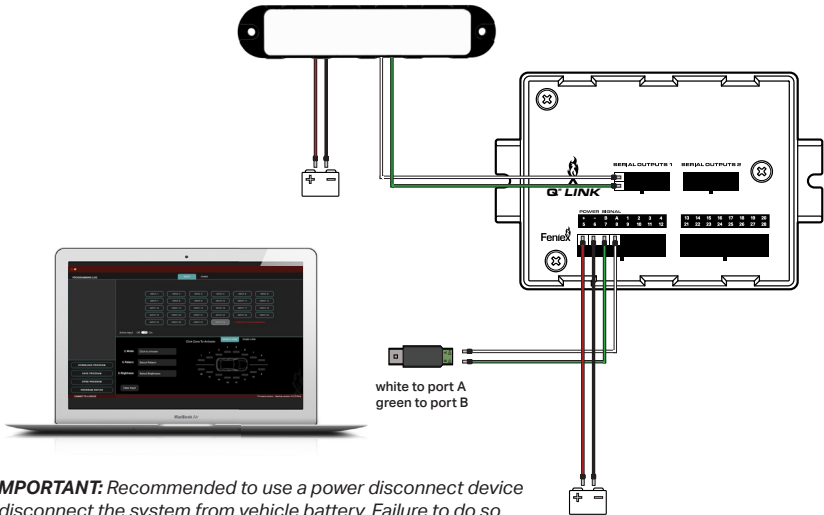
To assign colors to each zone individually select SINGLE under “Module Preference”.

▲ Q® LINK SOFTWARE (CONT.)

■ Programming Inputs: Q® Link Software

Setting zones with the Q Link software will require the light modules and Q Link to have power, ground, and serial data wires connected together. This step is crucial beforehand.

Example of Programming Inputs Connections:



► **IMPORTANT:** Recommended to use a power disconnect device to disconnect the system from vehicle battery. Failure to do so can deplete the vehicle's battery.

1. Select the desired input to program one of the following features:

► Function ► Pattern ► Brightness ► Color ► Zone(s)

2. Once all inputs have been selected to the desired functions, select "Program Device." Once successfully programmed, it is advisable to "Save Program" and set aside. This will allow you to reload the configuration file for any requirements by selecting "Open Program" to load.

3. Download Program is a feature that allows the user to extract any saved configuration file previously programmed on the Q Link.

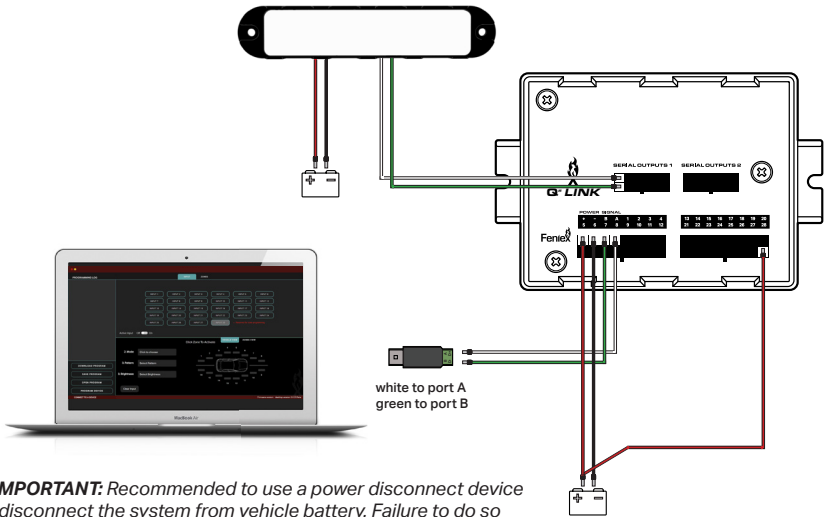
4. Active Input - This is a playback option to allow the end user to review what was programmed for verification before installation. The requirement is to have Q Series light modules powered and link via serial wires to the Q Link. (Zoning is also required to execute this process).



Q[®] LINK SOFTWARE (CONT.)

■ Setting Zones: Q[®] Link Software

Example of Zoning Connections:



► **IMPORTANT:** Recommended to use a power disconnect device to disconnect the system from vehicle battery. Failure to do so can deplete the vehicle's battery.

1. Ensure light modules have power, Ground, and serial wires connected appropriately.
2. Activate Zone Programming Wire (Input 28) to begin zoning.
3. Q Link Software - To begin zoning select the "Zones" tab.
4. Select the desired Zone in the Q Link software. All serial modules should light up blue.
5. Grab the supplied magnet and wave over the light module that is intended to be zoned. It will turn white. Repeat this process for the remaining zones.
6. Once the zoning has been complete, remove 12V+ from Input 28 (Zone Programming Wire), and power cycle the Q Link.